

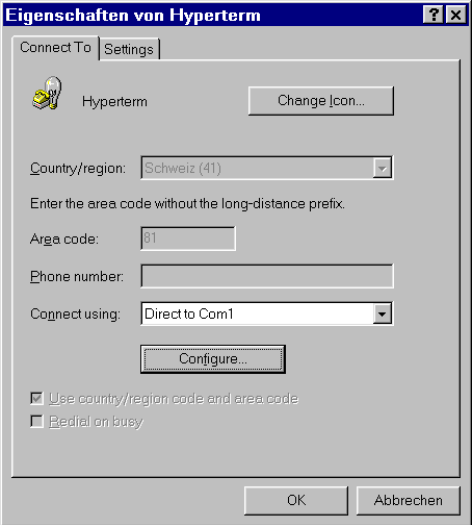
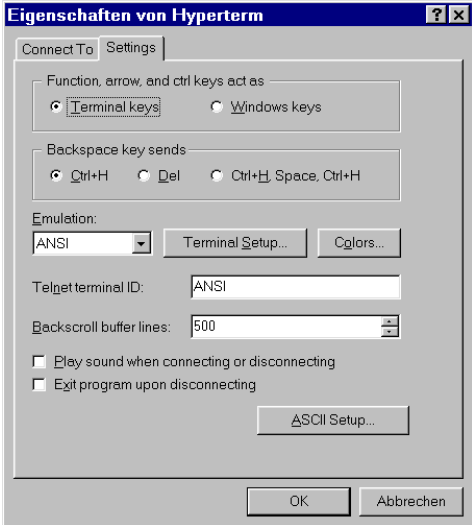
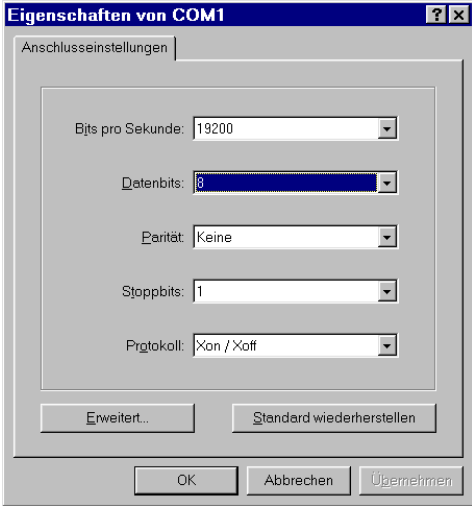
NLG 5 Monitoring

For displaying the actual values of the NLG 5, you need a terminal or a terminal program. It will display the text on the screen which the NLG 5 outputs at the serial interface. The easiest way is to use the program "Hyperterminal" which is included with most windows versions (see "Start | Programs | Accessories | Communication | HyperTerminal" or similar).

If the program is not installed on your PC, you may obtain it directly from the manufacturer:
<http://www.hilgraeve.com/htpe/index.html>

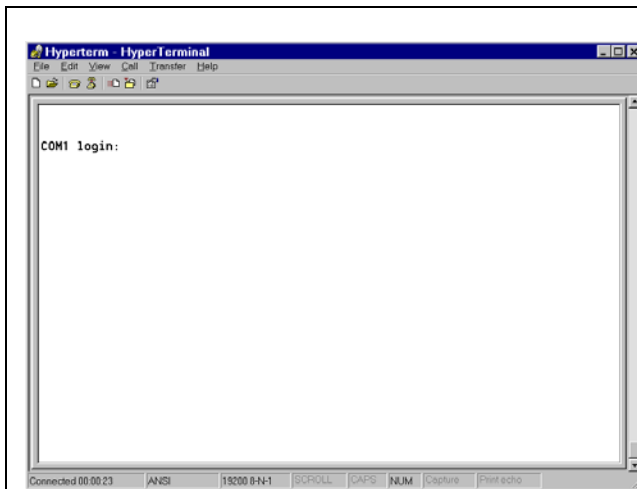
1. Hyperterminal setup

Start Hyperterminal and switch off the connection if it is already established (main menu "Call | Disconnect"). Under "File | Properties" set the following:

	
<p style="text-align: center;">↓</p> <p>In the window above click on the button "Configure" to call the configuration dialog for the serial port COM1 (see picture on the right). Configure the port according to the settings shown on the right, then close all open windows and the Hyperterminal program.</p>	

2. Start Monitoring

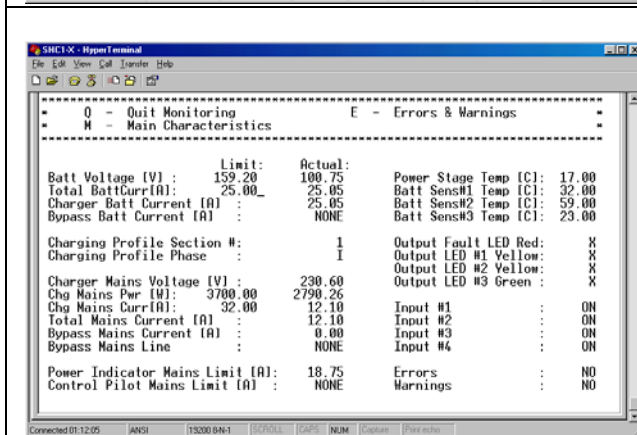
Connect the serial port COM1 of the PC to the serial port of your NLG 5. Start the Hyperterminal program and press "Enter" on the keyboard, so the following should be displayed:



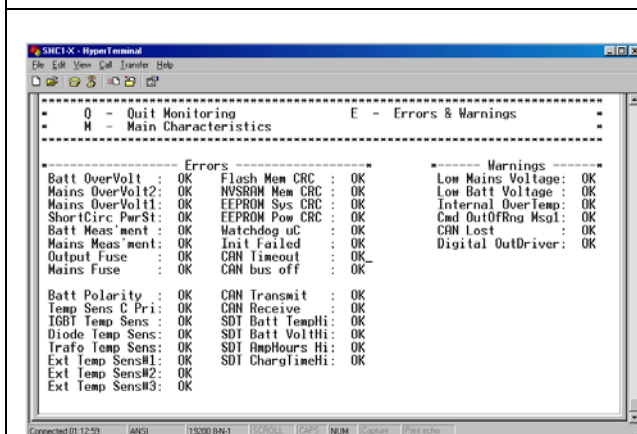
Type in the following on the keyboard:

monitor

and press the "Enter" key. Take care not to type any capitals, spaces, corrections etc., otherwise the input will not be recognized. If you have mistyped the word although, just press the "Enter" key; then reenter the word correctly and press the "Enter" key again.



The window "Main Characteristics" shown on the left will be displayed on the screen. It displays the main actual values of the NLG 5. If errors, warnings etc. occur, they can be displayed in detail by pressing the "e" key, so the "Errors & Warnings" window is displayed.



The "Errors & Warnings" window displays error and warning conditions. Errors generally cause the NLG to stop charging, while warnings indicate that charging may be detracted but will be continued at reduced power output e.g. Press the key "m" to return to the "Main Characteristics" window. Quit monitoring by pressing the "q" key.